



Learning

to be ready for the future!

2019

**Junior
SUMMER
School**

Key Facts

The MCSE summer school is a chance for young students to develop their English language skills and get inspired about the world of tomorrow.

15h English Lessons Start

Date: 8th July Location:

Peel Park, Salford

University

Age range: 10- 17

On campus

All meals included

Full day excursions

Afternoon activities

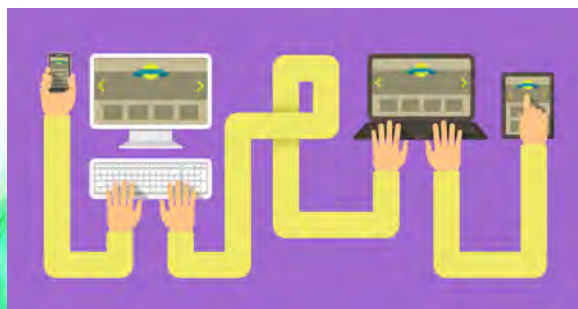
Excellent welfare



"Get creative" Workshops

Video creations,
creative writing, and
many more

CODING AND ROBOTICS



Programme

Our programme is designed to give our students an unforgettable chance to gain valuable skills whilst practicing their English.



Lessons:

- 15 hours of General English
- Qualified teachers
- Maximum 15 students per class
- Course completion certificate



Timetable Monday to Friday

8.00-9.15 Breakfast
9.30-12.45 English
12.45-13.45 Lunch
13.45-17.00 Activities
18.30-19.30 Dinner
19.30-20.30 Evening Games

Full social programme

- 1 half day excursion
- 1 Full day excursion
- Afternoon activities

Excursions:

- Museum of Science and Industry
- Knowsley Safari Park Chester's
- Crocky Trail
- Trip to the Lake District
- Manchester United Stadium Tour
- Imperial War Museum
- City tours: Liverpool, York and many more!

Accreditations and Memberships

Accredited by the
BRITISH COUNCIL
for the teaching
of English in the UK

ENGLISHUK
member

ENGLISHUK
north

 **UNIVERSITY OF
CAMBRIDGE**

PFE
People Further
Education
Manchester Central School
of English
Educational Oversight

**Greater
Manchester
Chamber
of Commerce**

Accommodation

Luxury Residence

Full board

- ✓ On- campus
- ✓ Modern rooms and buildings
- ✓ En-suite bedrooms
- ✓ All meals included: breakfast, hot lunches and dinner



Located on the University of Salford's Peel Park campus

There are on-site staff 24 hours a day, including a staffed reception area and overnight security.

Multiple social areas with TVs, cinema rooms, games room with pool, ping-pong tables, kitchen and gym.

All facilities are free for resident to use

Bedroom Facilities

Students are provided with a bedding and towel pack which includes:

- Duvet and duvet cover
- Base sheet, pillow and pillow case
- Towels
- Complimentary toiletry pack



Welfare



As well as inspiring and encouraging our students, we also provide support and assistance to ensure they feel at home and have an unforgettable experience with us.

Under 18s

Designated Safeguarding Officers

Students must sign in and out of school.

Our staff have extra procedures to follow if any students are absent from class.

Please check our Safeguarding Policy for more information regarding under 18 students.



- **Colour coded lanyard system different for junior students, group leaders, teachers and our Safeguarding and Welfare Officers.**
- **All staff are DBS checked**
- **All staff undergo Safeguarding and Health and Safety training**
- **Our teachers are first aid trained**

WHY CHOOSE MCSE?



1

Innovative Teaching

"My daughter loves the activities in the program, and the teachers treated the students like friends, this is so different from China. I will recommend this to my friends."

Linan, China

2

Superb Location

"The student residence is very good. Teachers and staff are very patient and helpful."

David, Slovakia



3

Exciting Social Programme

"This is a must do experience! I enjoyed a lot of the Social Programme, in particular the afternoons we played football!"

Anna, Italy



Manchester Central School of English
2nd & 3rd Floor Royal Building
2 Mosley Street
Manchester
M23AN

Tel: + 44 (0) 1612367575
Email: info@manchestercse.co.uk



@MCSEschool



@MCSESchool



MCSESchool



MCSEVideos



@ManchesterCentralSchool
ofEnglish